

**Scala B Piano 1°-2°**

**Interno 1**

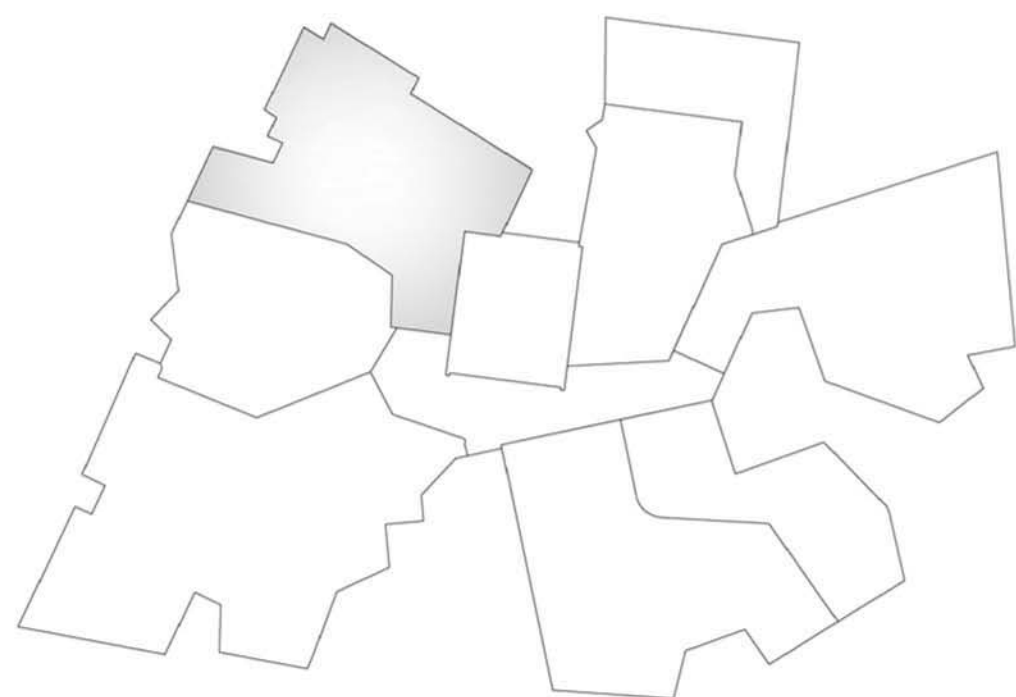
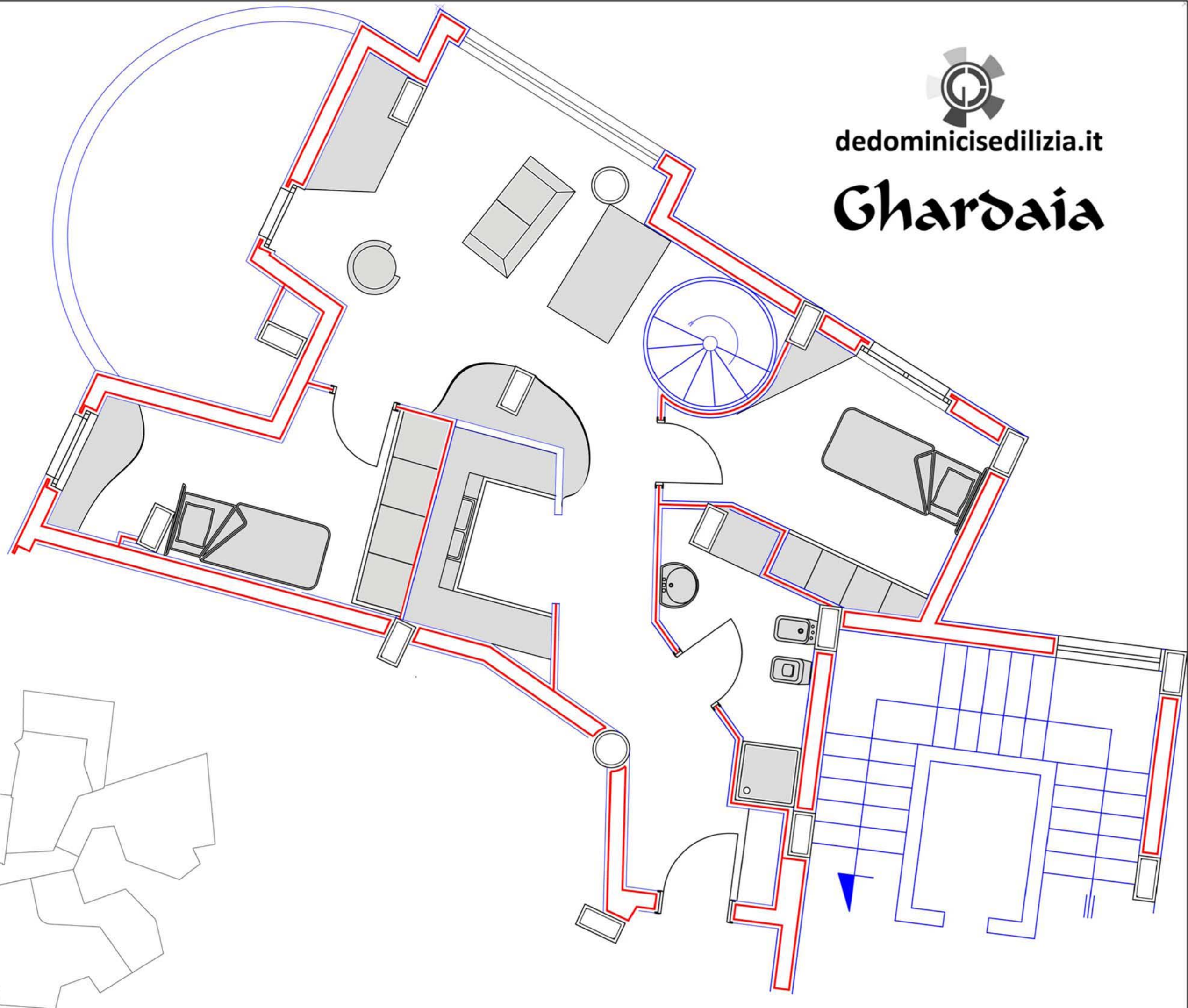
**Tot mq: 130,40**

**Piano terra mq 94,7**



**dedominicisedilizia.it**

**Ghardaia**



**Scala B Piano 1°-2°**

**Interno 1**

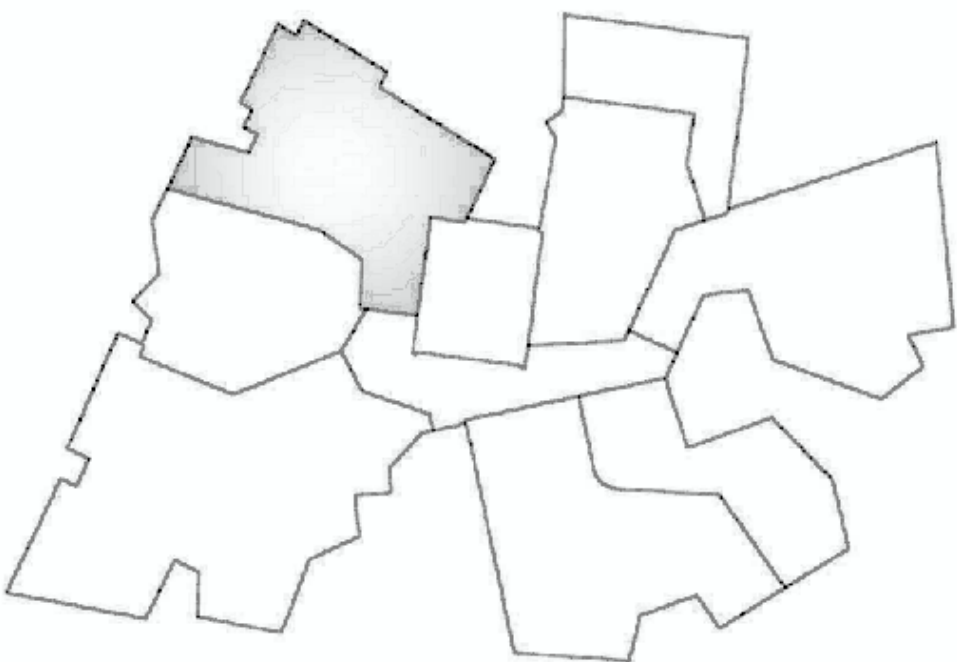
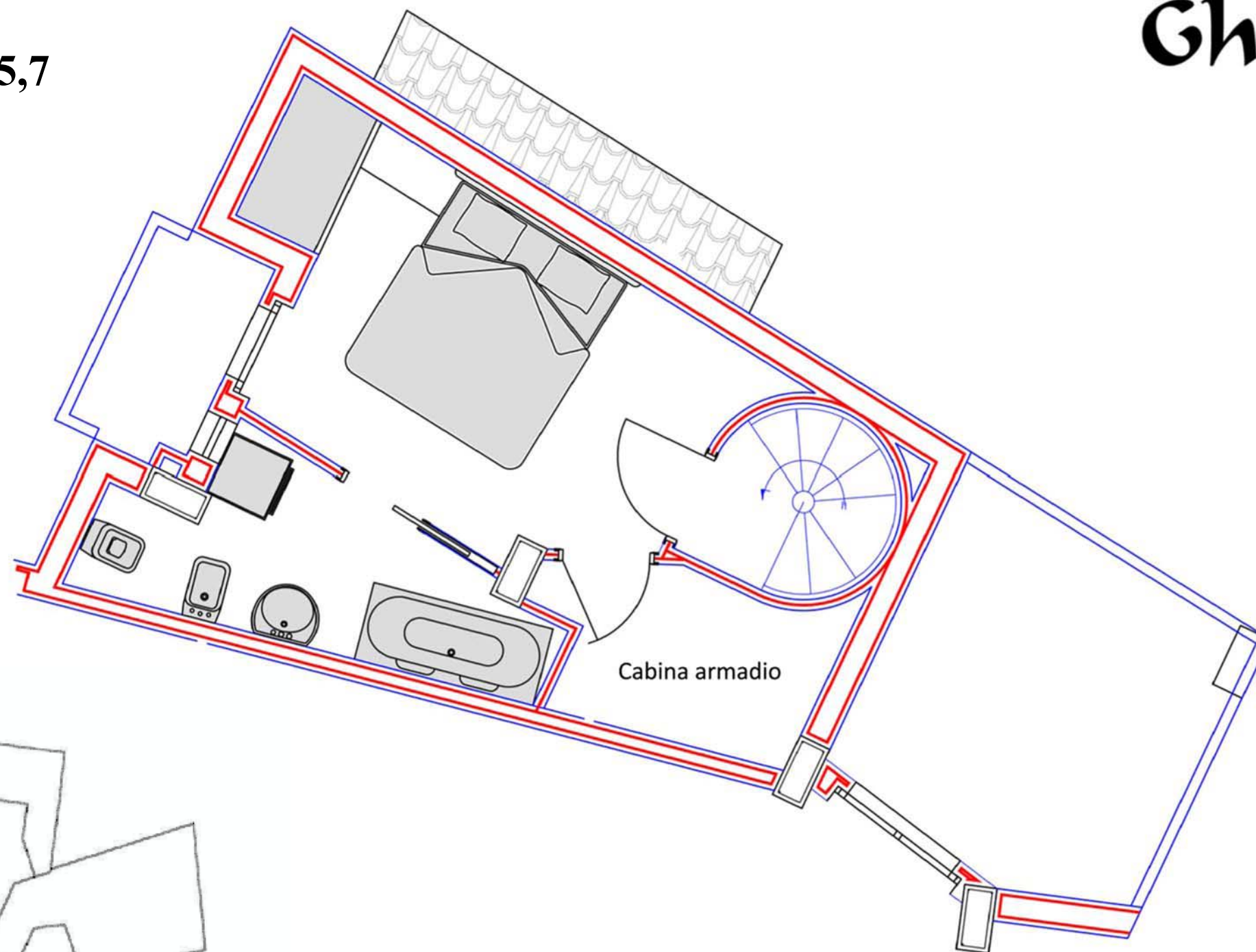
**Tot mq: 130,40**

**Piano primo mq 35,7**



**dedominicisedilizia.it**

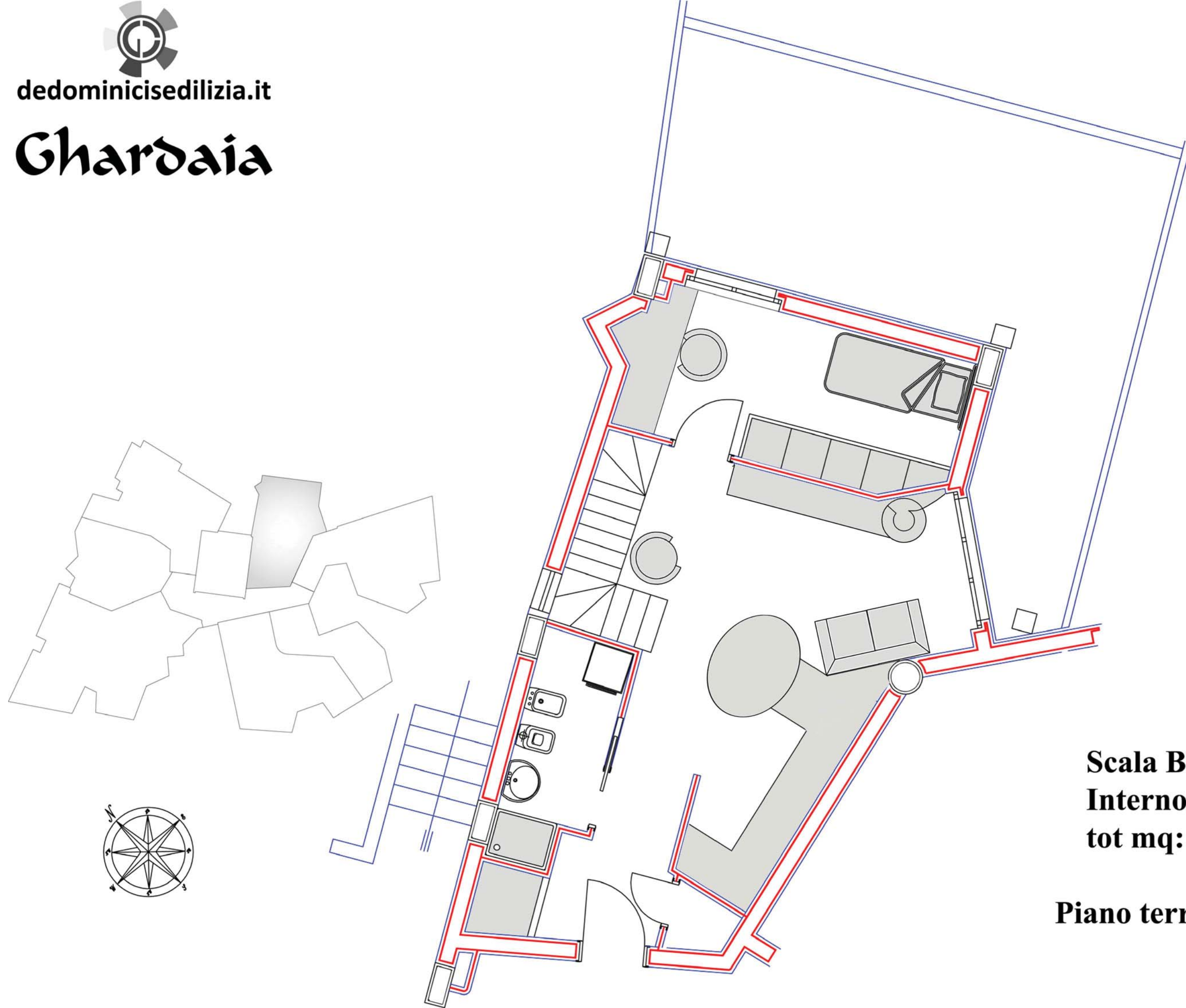
**Ghardaia**





dedominicisedilizia.it

# Ghardaia



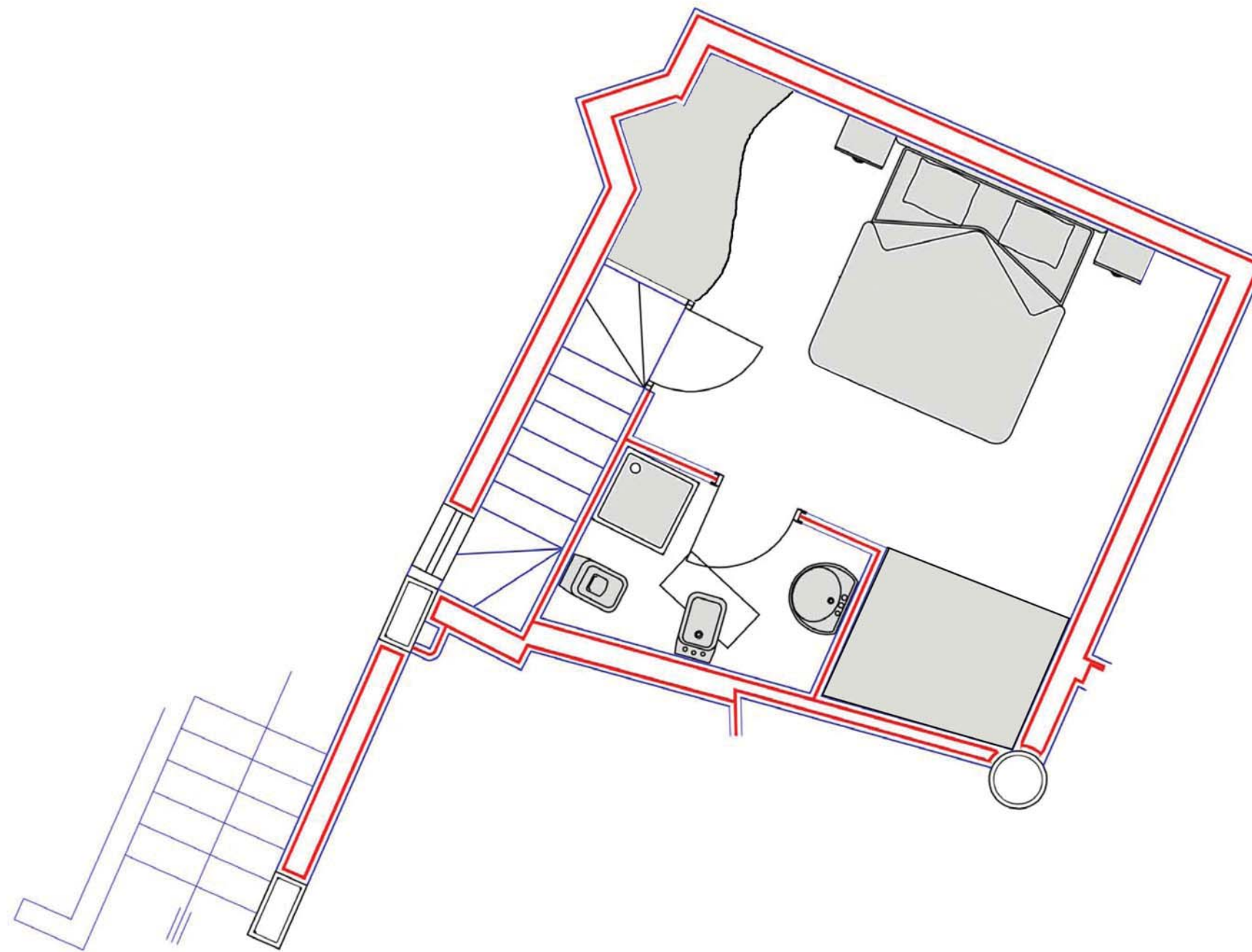
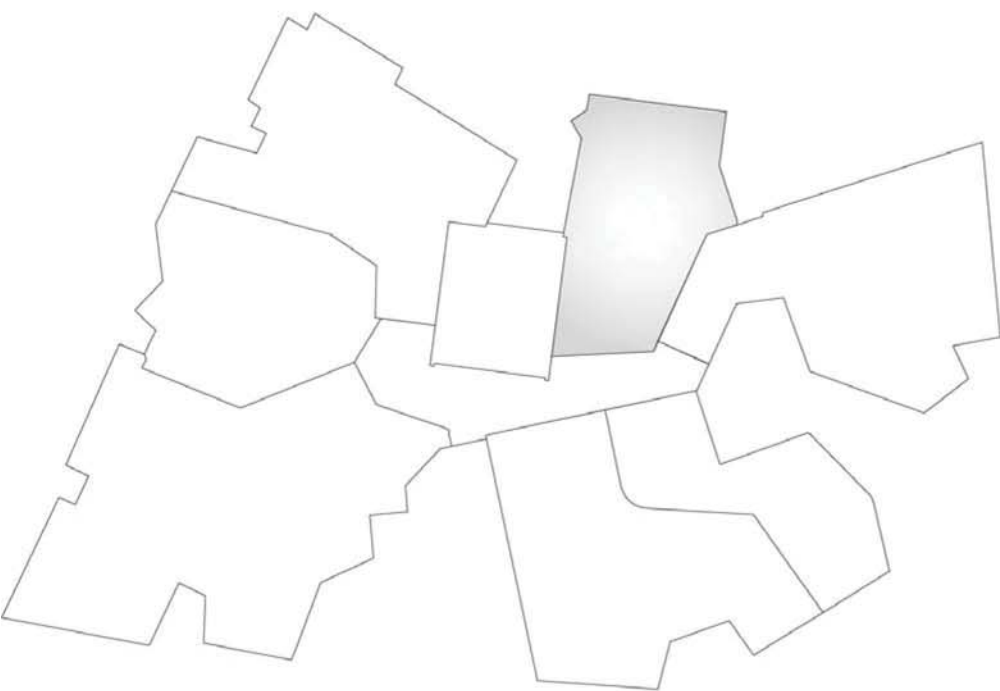
**Scala B piano 1° - 2°**  
**Interno 2**  
**tot mq: 94,92**

**Piano terra mq 60,83**



dedominicisedilizia.it

# Ghardaia



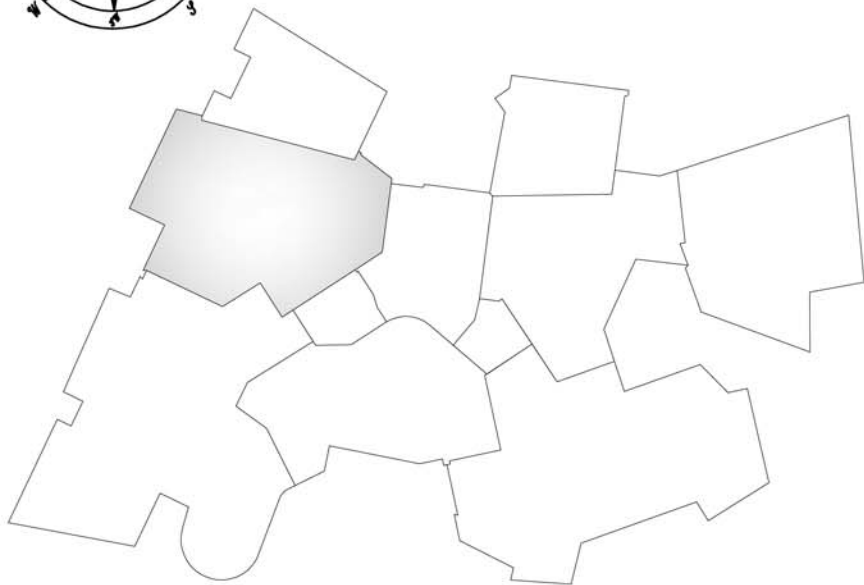
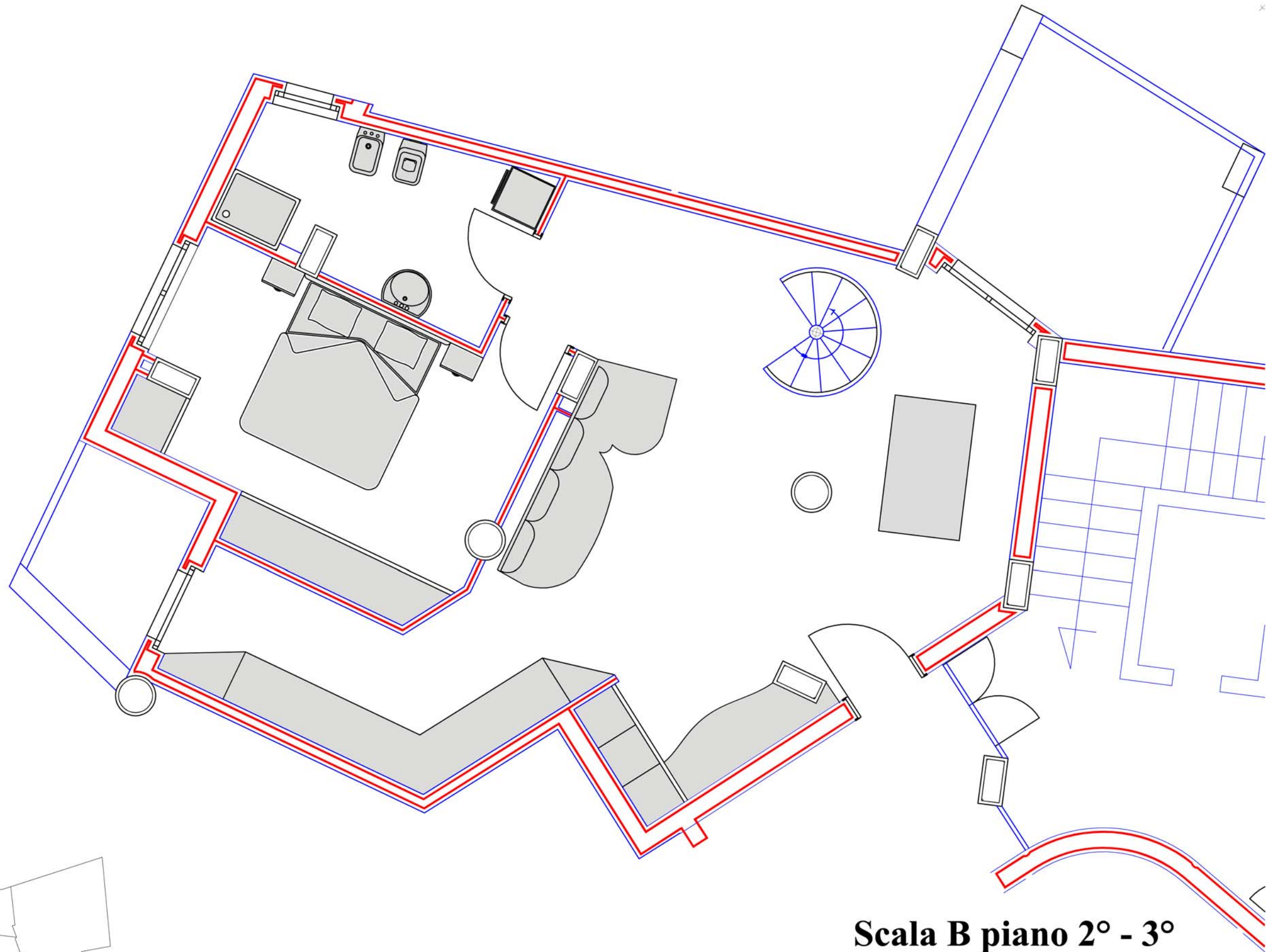
**Scala B piano 1° - 2°**  
**Interno 2**  
**tot mq: 94,92**

**Piano primo mq 34,09**



dedominicisedilizia.it

# Ghardaia



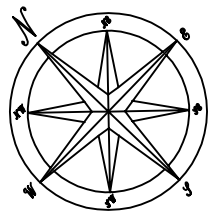
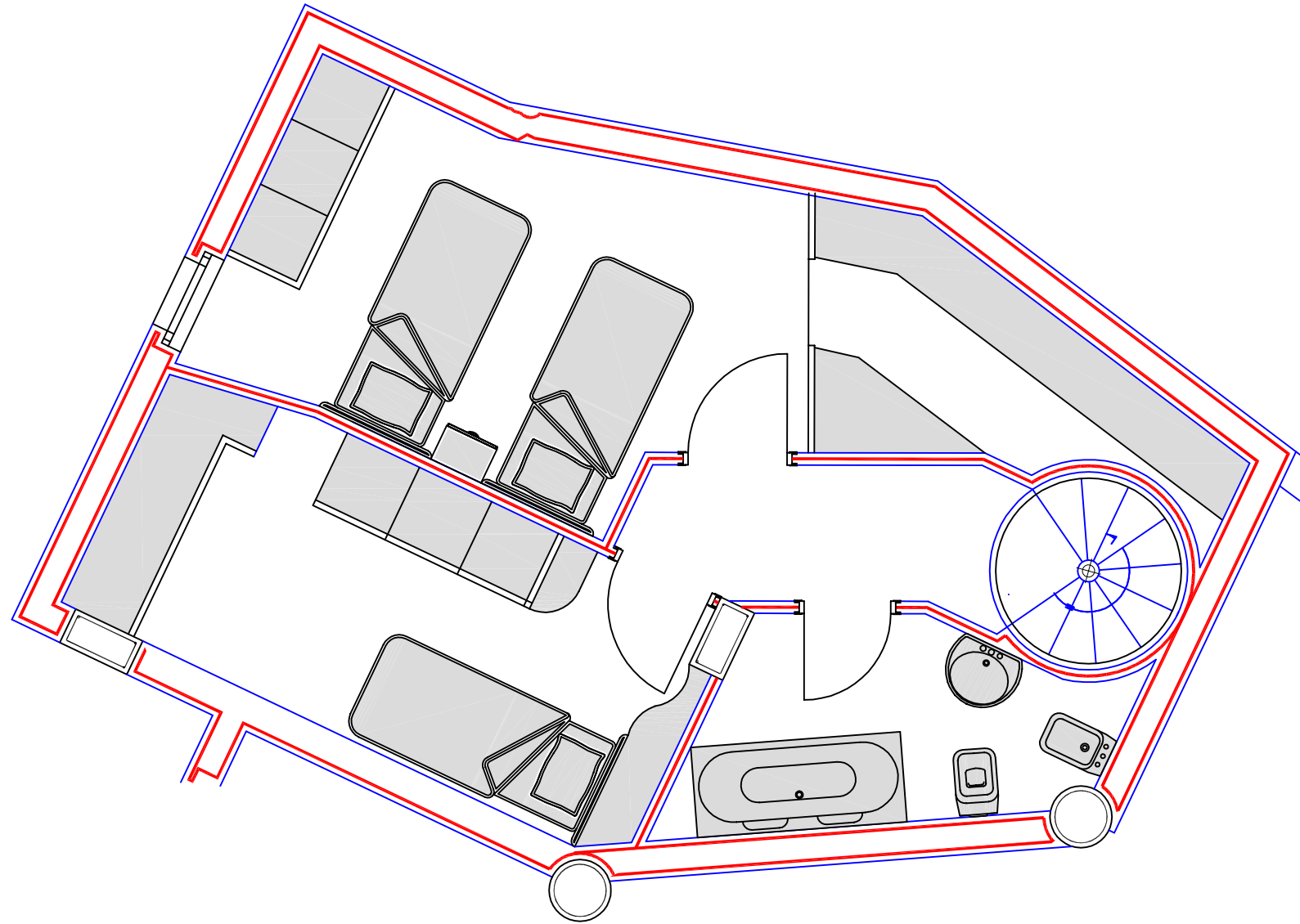
**Scala B piano 2° - 3°**  
**Interno 12**  
**tot mq: 143,79**

**Piano terra mq 91,46**



dedominicisedilizia.it

# Ghardaia



**Scala B piano 2° - 3°**

**Interno 12**

**tot mq: 157,23**

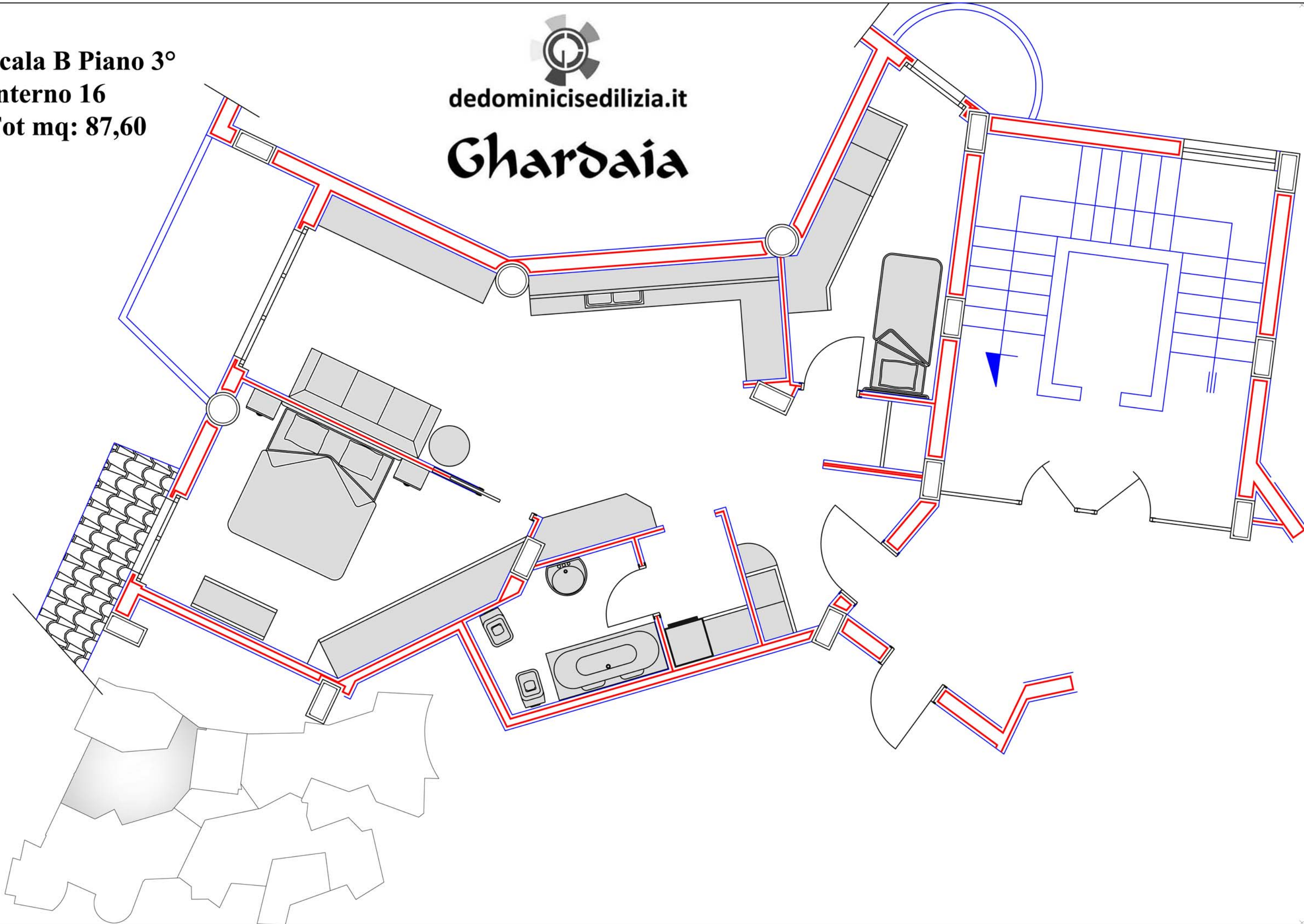
**Piano secondo mq 52,33**

**Scala B Piano 3°**  
**Interno 16**  
**Tot mq: 87,60**



**dedominicisedilizia.it**

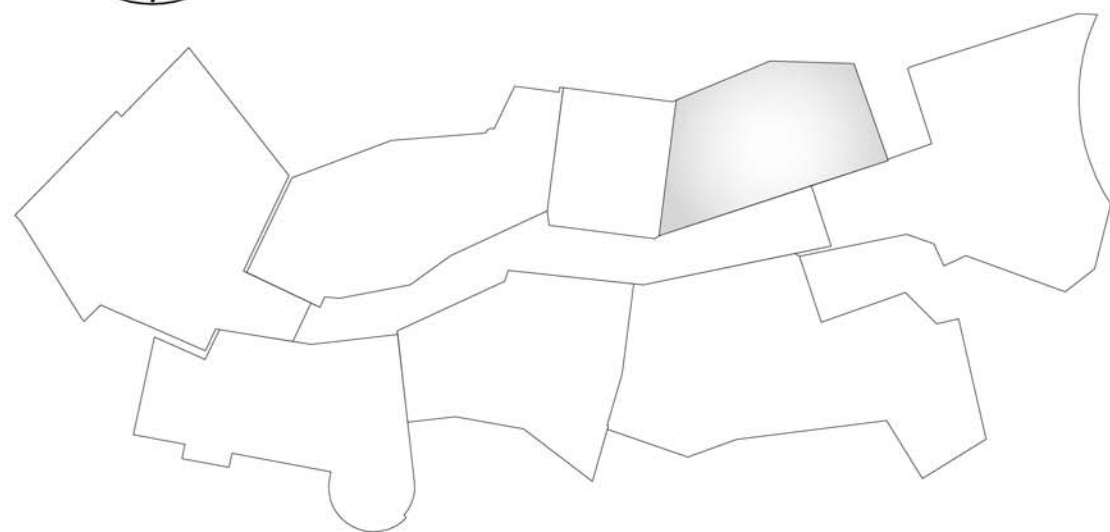
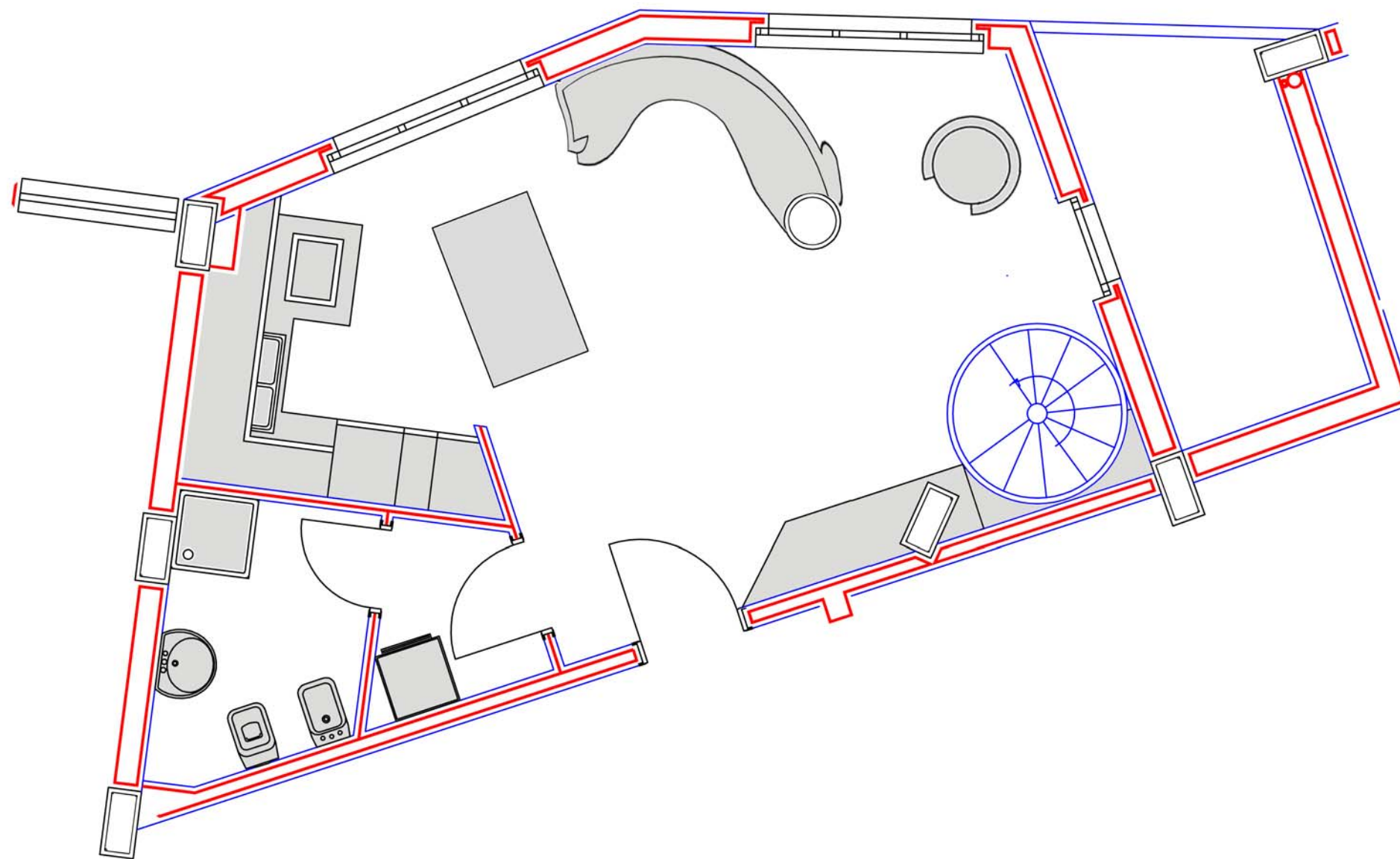
**Ghardaia**





dedominicisedilizia.it

# Ghardaia



**Scala B piano 4° - 5°**  
**Interno 18**  
**tot mq: 121,76**

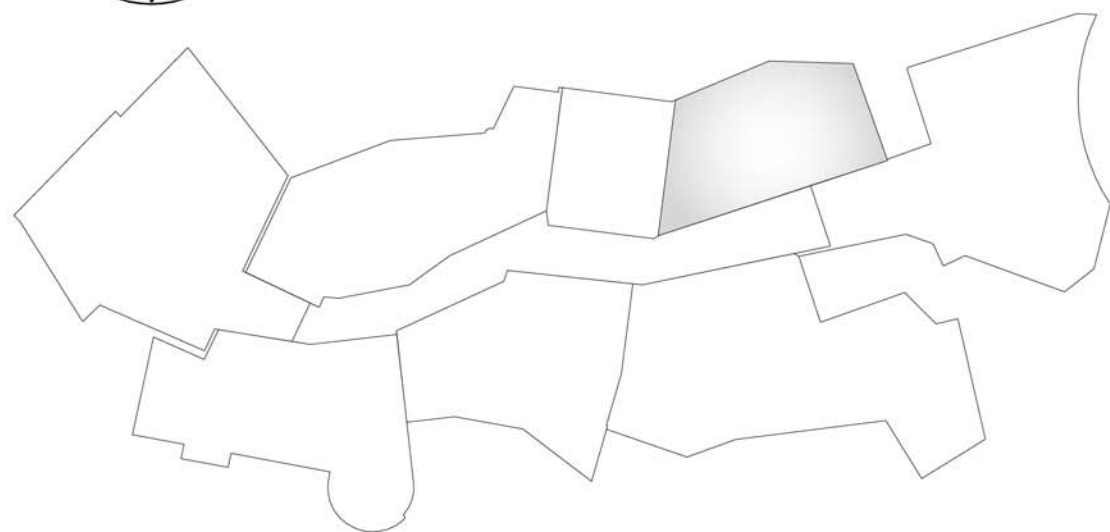
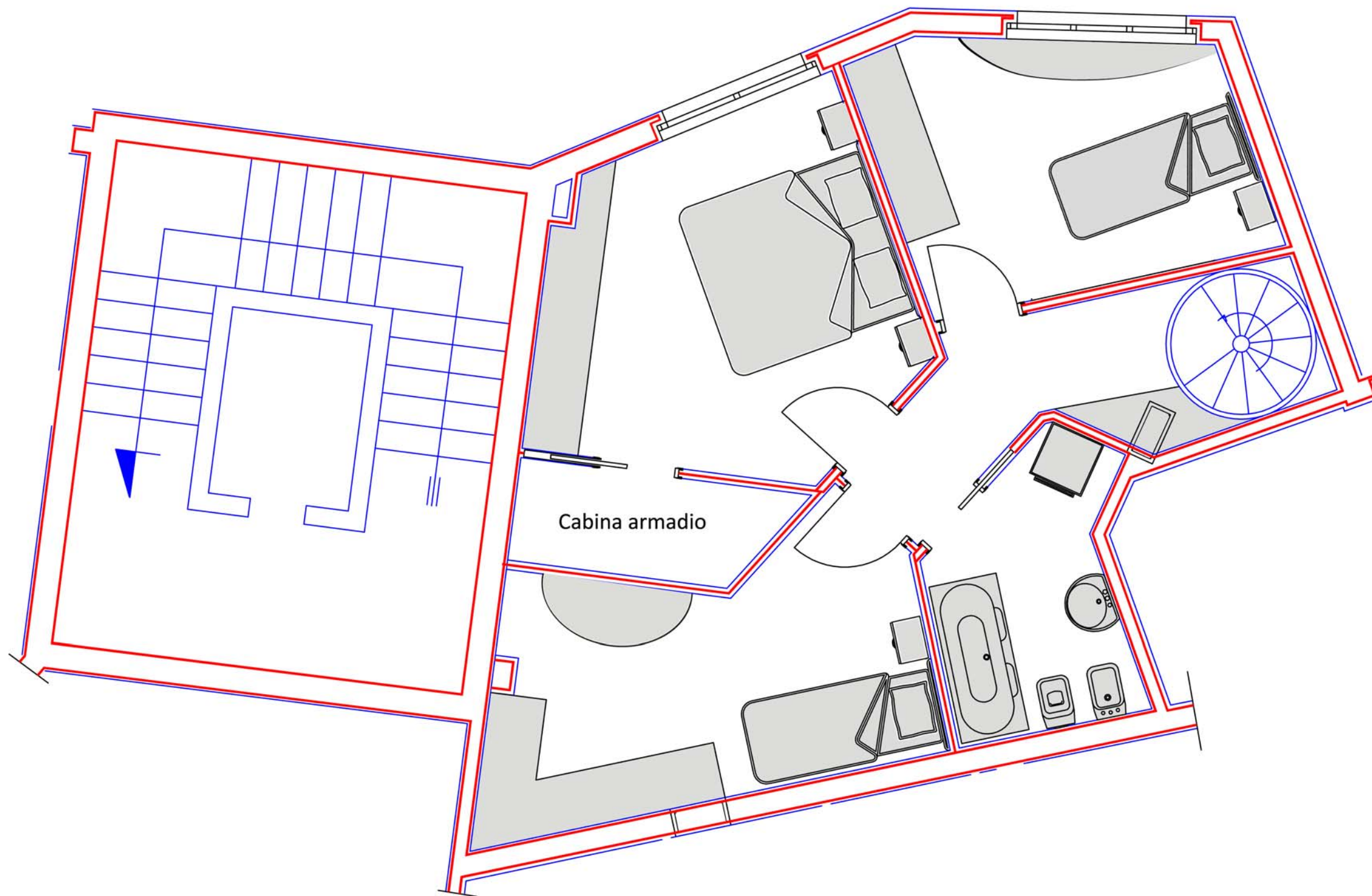
**Piano secondo mq 56,35**





dedominicisedilizia.it

**Ghardaia**



**Scala B piano 4° - 5°**

**Interno 18**

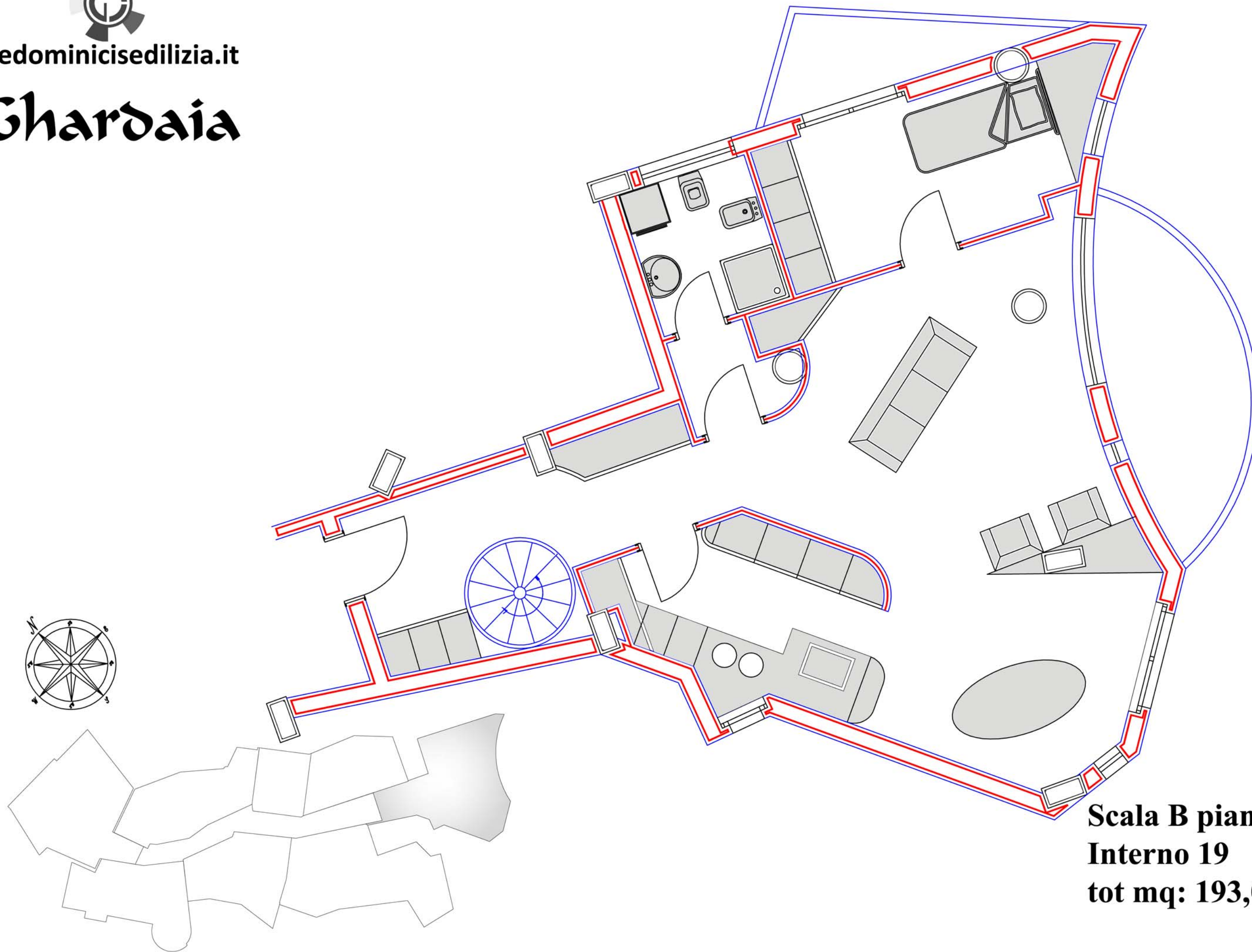
**tot mq: 121,76**

**Piano secondo mq 65,41**



dedominicisedilizia.it

# Ghardaia



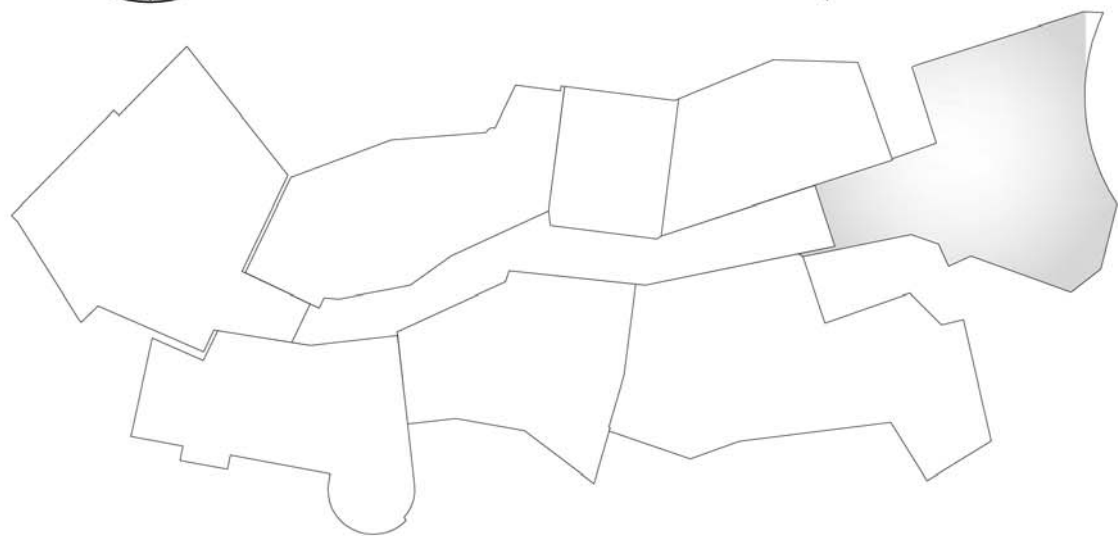
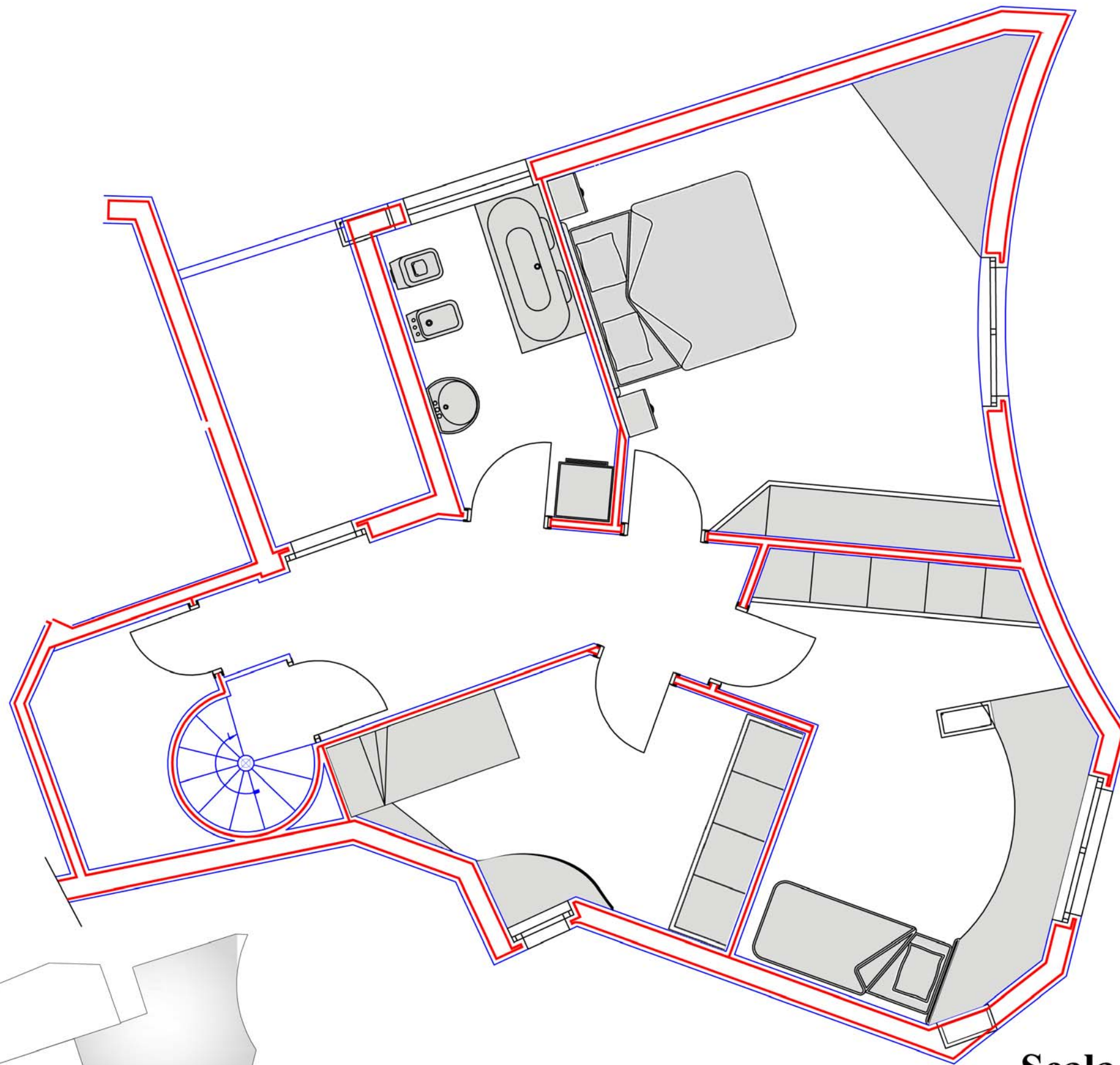
**Scala B piano 4° - 5°**  
**Interno 19**  
**tot mq: 193,02**

**Piano primo mq 96,92**



dedominicisedilizia.it

# Ghardaia



**Scala B piano 4° - 5°**

**Interno 19**

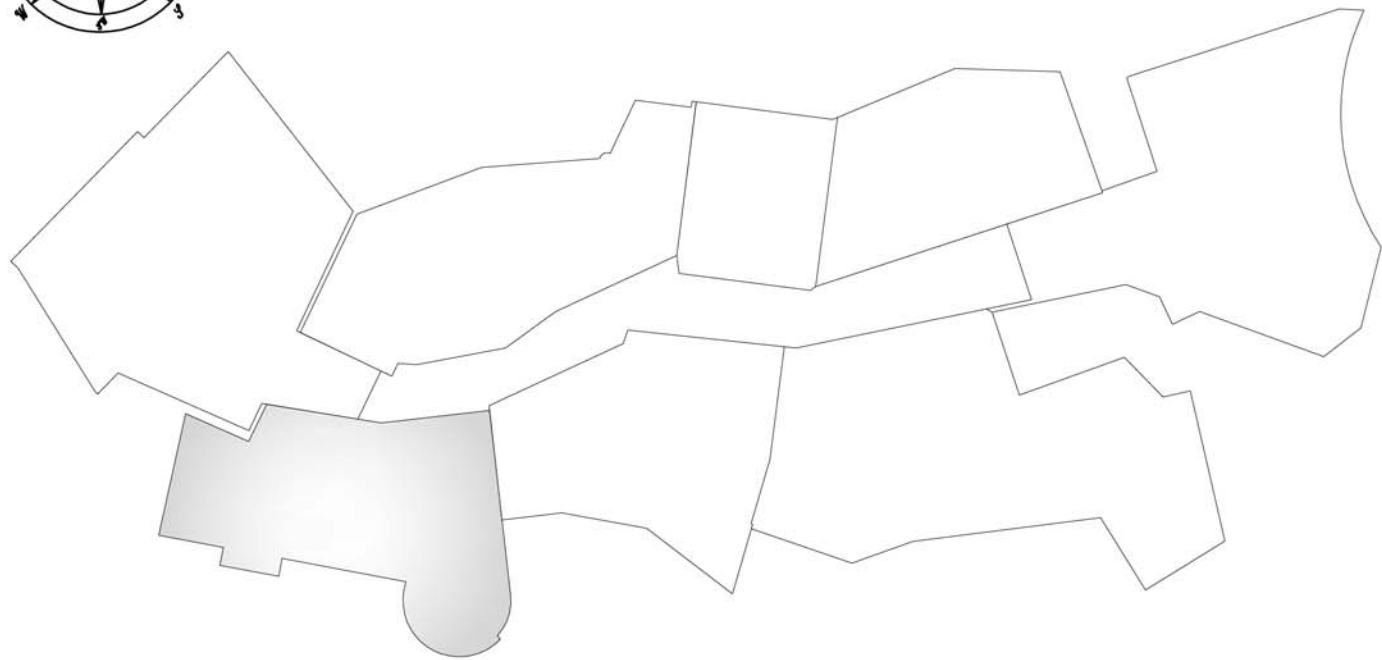
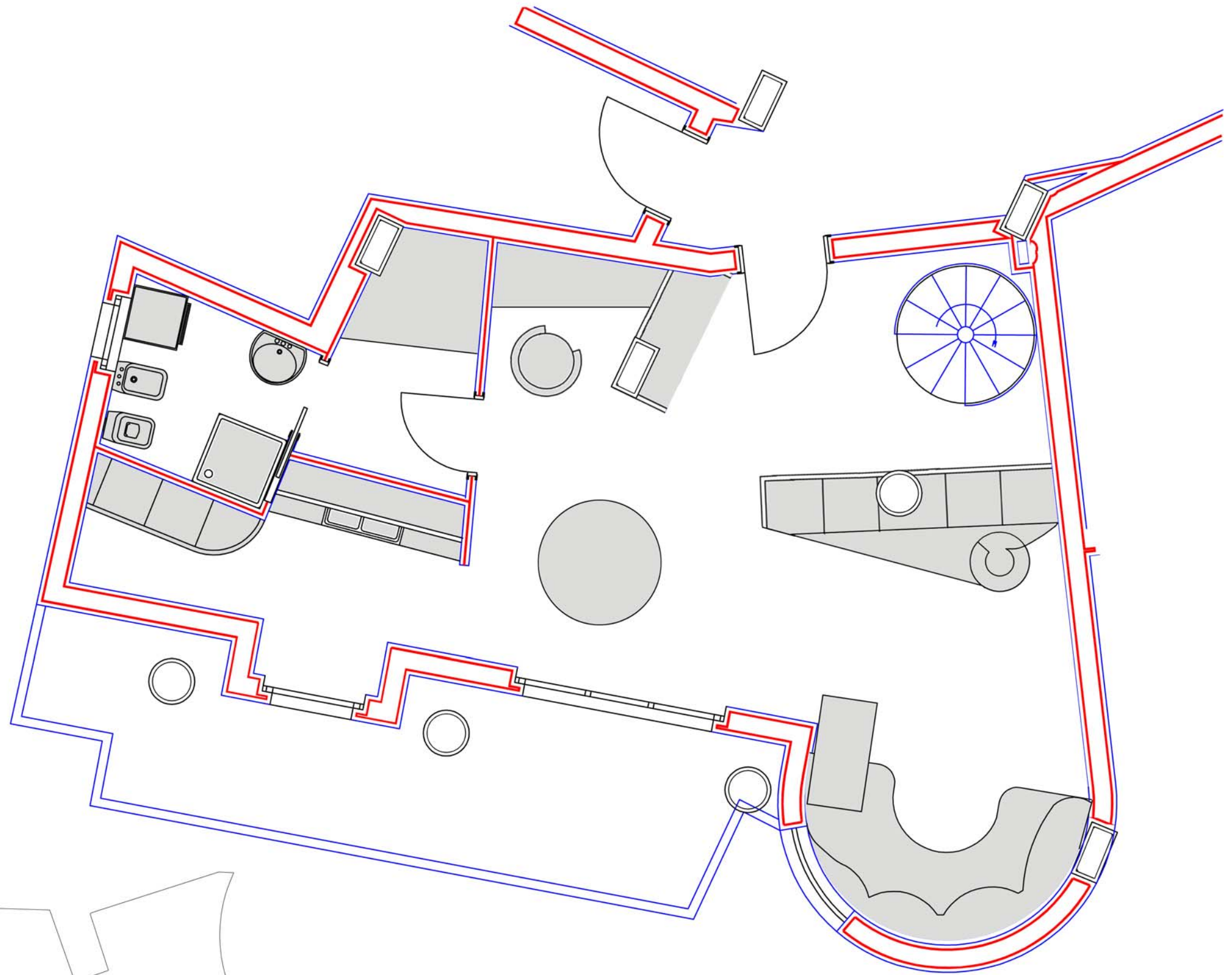
**tot mq: 193,02**

**Piano secondo mq 96,1**



dedominicisedilizia.it

# Ghardaia



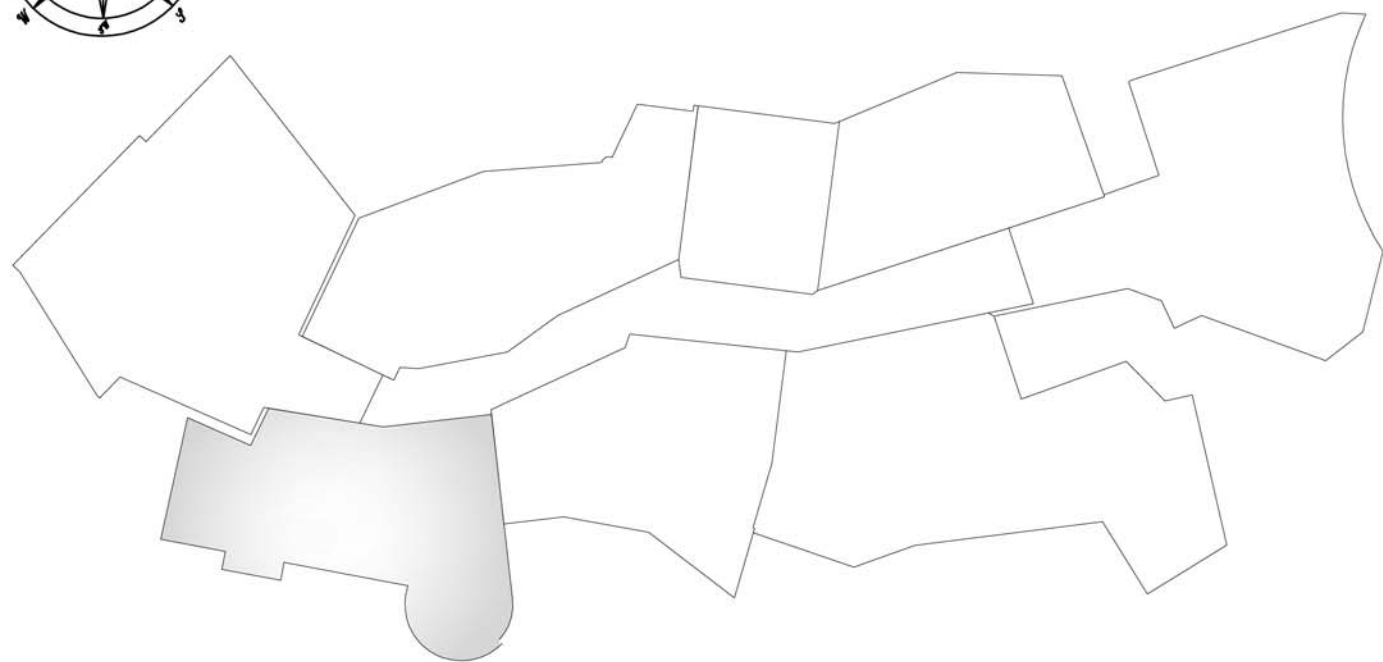
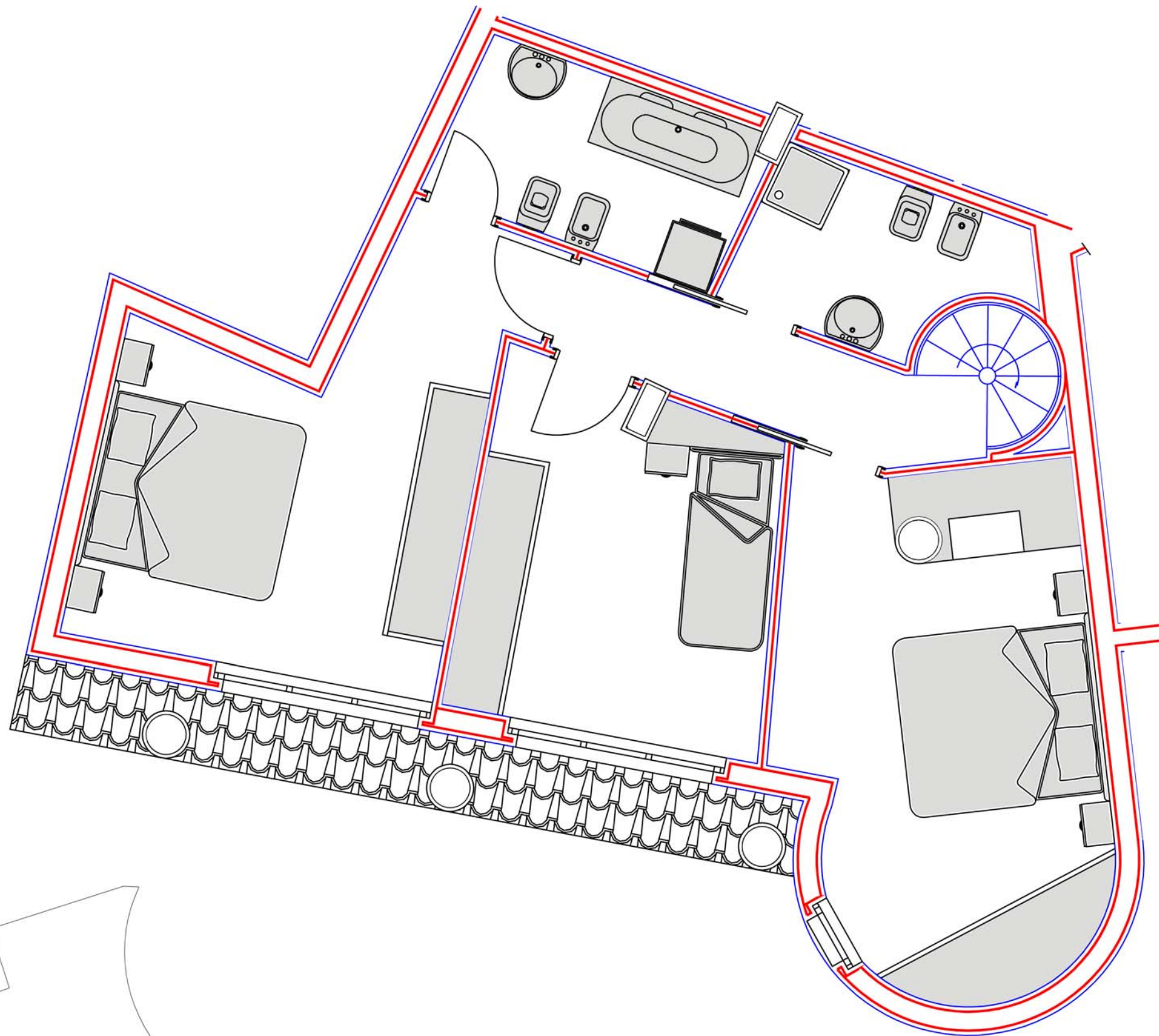
**Scala B piano 4° - 5°**  
**Interno 22**  
**tot mq: 160,3**

**Piano primo mq 73,5**



dedominicisedilizia.it

# Ghardaia



**Scala B piano 4° - 5°**  
**Interno 22**  
**tot mq: 160,3**

**Piano secondo mq 86,8**